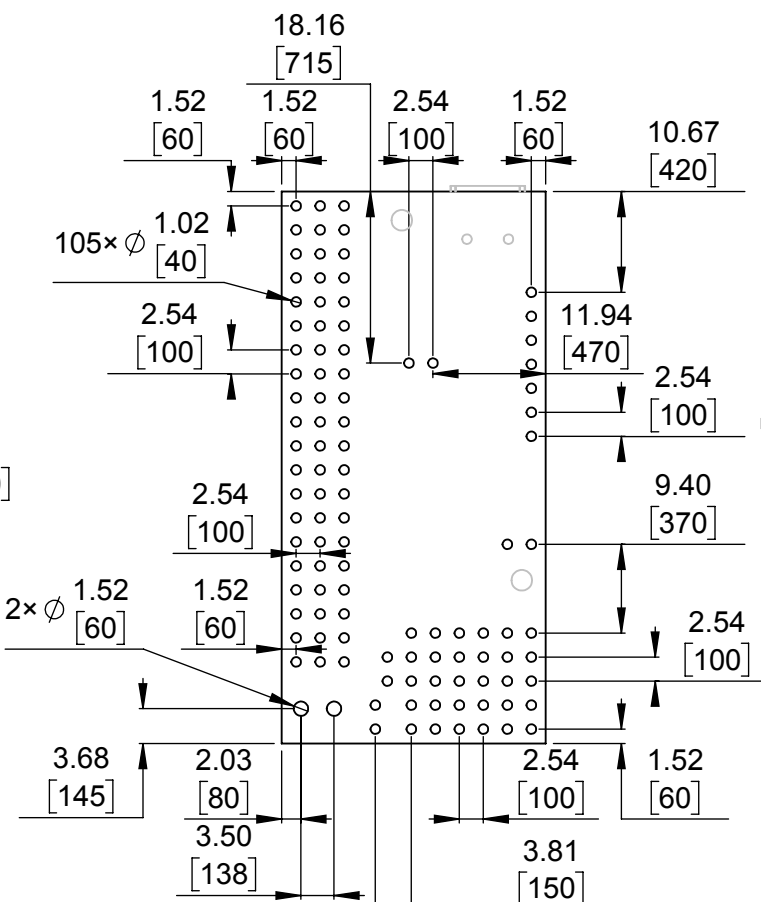
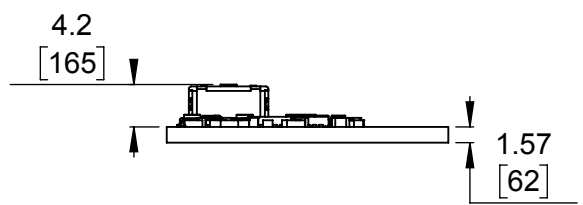


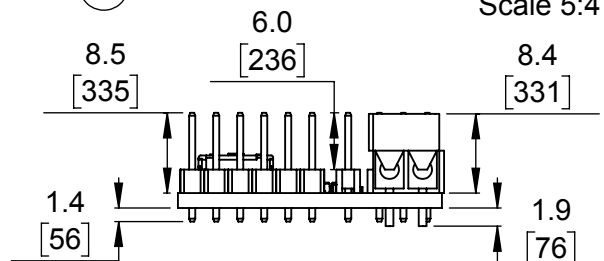
1 Board dimensions (top view)
Scale 5:4



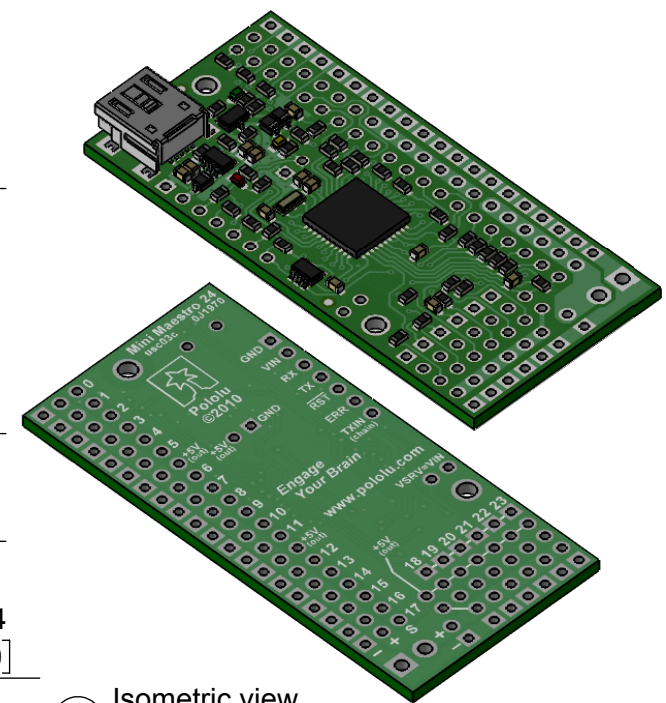
2 Connector callouts (bottom view)
Scale 5:4



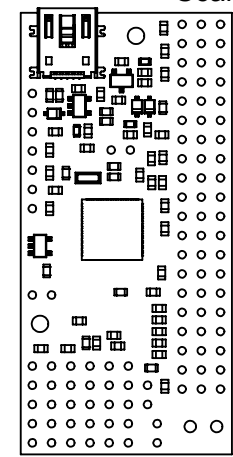
4 Profile
Scale 5:4



5 Profile (with through-hole connectors)
Scale 5:4



3 Isometric view
Scale 5:4



6 Actual size
Scale 1:1

- To get the specified scale, select 100% in print settings.
- Drill location tolerance: ± 0.1 [± 5].
- Board edge tolerance: ± 0.3 [± 10].

https://www.pololu.com/product/1356	
Name: Mini Maestro 24-Channel USB Servo Controller	Item number: 1356, 1357
Drawing date: 20 May 2016	
Units: mm [mil]	PCB dev code: usc03c
 © 2016 Pololu Corporation	